

Climate joys and cares: the third camp

Climate change

A change in the state of the climate that can be identified (e.g., by using statistical tests) by changes in the mean and/or the variability of its properties and that persists for an extended period, typically decades or longer. Climate change may be due to natural internal processes or external forcings such as modulations of the solar cycles, volcanic eruptions and persistent anthropogenic changes in the composition of the atmosphere or in land use.



Anthropogenic

Resulting from or produced by human activities.

IPCC, 2023: *Climate Change 2023: Synthesis Report. Contribution of Working Groups I, II and III to the Sixth Assessment Report of the Intergovernmental Panel on Climate Change* [Core Writing Team, H. Lee and J. Romero (eds.)]. IPCC, Geneva, Switzerland, pp. 35-115, doi: 10.59327/IPCC/AR6-9789291691647.

DENIERS

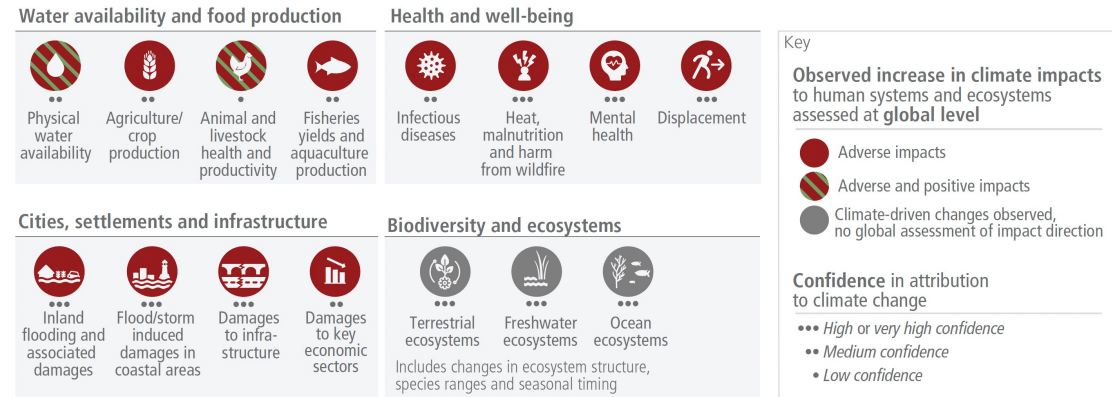
Climate change

A change in the state of the climate that can be identified (e.g., by using statistical tests) by changes in the mean and/or the variability of its properties and that persists for an extended period, typically decades or longer. Climate change may be due to natural internal processes or external forcings such as modulations of the solar cycles, volcanic eruptions and persistent anthropogenic changes in the composition of the atmosphere or in land use.

ALARMISTS

IPCC, 2023: Climate Change 2023: Synthesis Report. Contribution of Working Groups I, II and III to the Sixth Assessment Report of the Intergovernmental Panel on Climate Change [Core Writing Team, H. Lee and J. Romero (eds.)]. IPCC, Geneva, Switzerland, pp. 35-115, doi: 10.59327/IPCC/AR6-9789291691647.

a) Observed widespread and substantial impacts and related losses and damages attributed to climate change



b) Impacts are driven by changes in multiple physical climate conditions, which are increasingly attributed to human influence

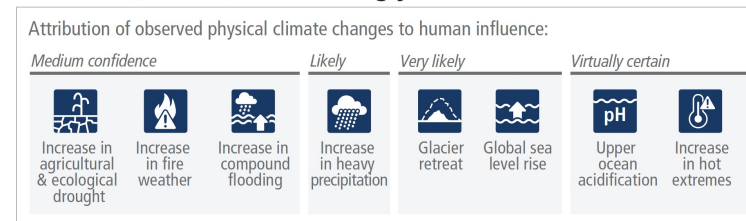
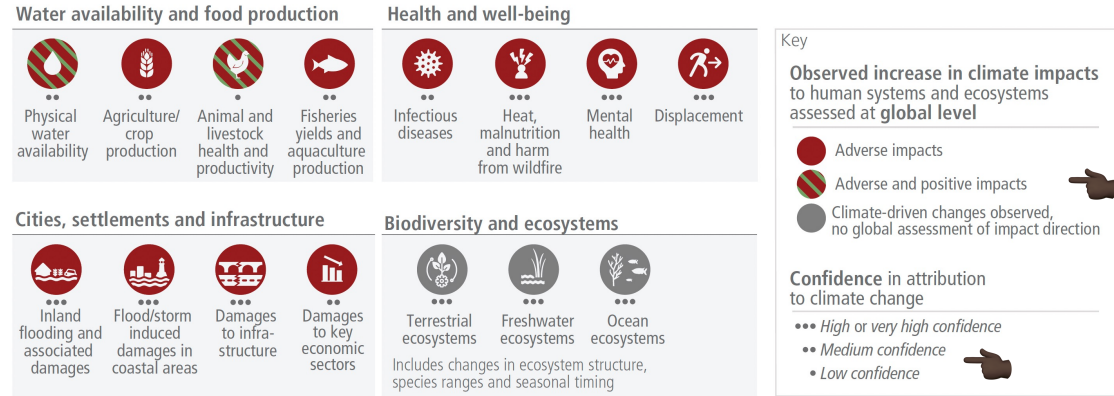


Figure SPM.1: (a) Climate change has already caused widespread impacts and related losses and damages on human systems and altered terrestrial, freshwater and ocean ecosystems worldwide. Physical water availability includes balance of water available from various sources including ground water, water quality and demand for water. Global mental health and displacement assessments reflect only assessed regions. Confidence levels reflect the assessment of attribution of the observed impact to climate change. (b) Observed impacts are connected to physical climate changes including many that have been attributed to human influence such as the selected climatic impact-drivers shown. Confidence and likelihood levels reflect the assessment of attribution of the observed climatic impact-driver to human influence. (c) Observed (1900–2020) and projected (2021–2100) changes in global surface temperature (relative to 1850-1900),

IPCC, 2023: *Climate Change 2023: Synthesis Report. Contribution of Working Groups I, II and III to the Sixth Assessment Report of the Intergovernmental Panel on Climate Change* [Core Writing Team, H. Lee and J. Romero (eds.)]. IPCC, Geneva, Switzerland, pp. 35-115, doi: 10.59327/IPCC/AR6-9789291691647.

a) Observed widespread and substantial impacts and related losses and damages attributed to climate change



It's a mix bag of good and bad. We don't know yet.

We are not sure.

b) Impacts are driven by changes in multiple physical climate conditions, which are increasingly attributed to human influence

We are not sure.

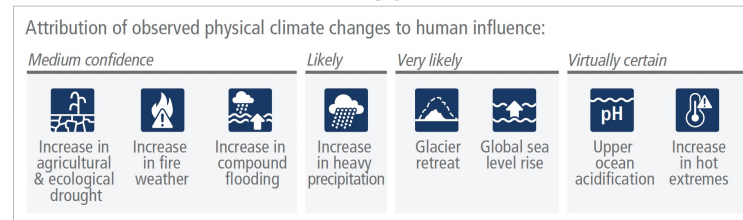
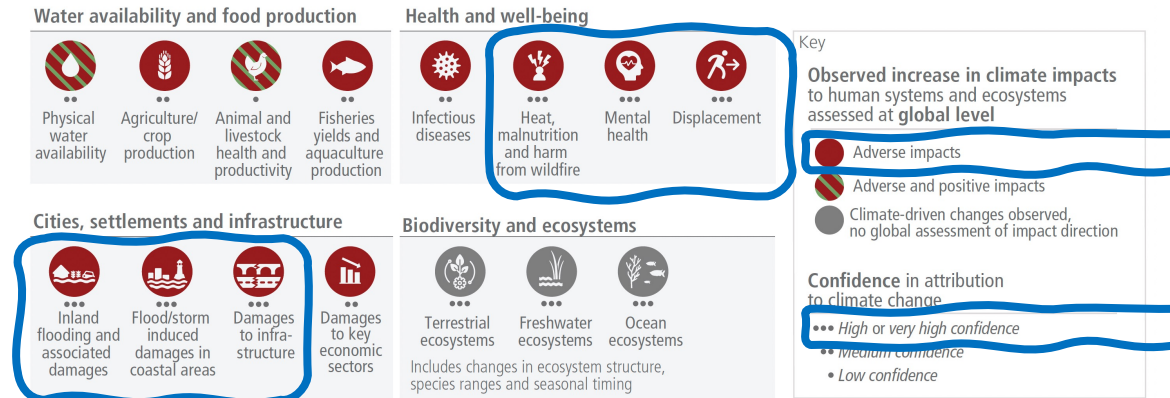


Figure SPM.1: (a) Climate change has already caused widespread impacts and related losses and damages on human systems and altered terrestrial, freshwater and ocean ecosystems worldwide. Physical water availability includes balance of water available from various sources including ground water, water quality and demand for water. Global mental health and displacement assessments reflect only assessed regions. Confidence levels reflect the assessment of attribution of the observed impact to climate change. (b) Observed impacts are connected to physical climate changes including many that have been attributed to human influence such as the selected climatic impact-drivers shown. Confidence and likelihood levels reflect the assessment of attribution of the observed climatic impact-driver to human influence. (c) Observed (1900–2020) and projected (2021–2100) changes in global surface temperature (relative to 1850-1900),

IPCC, 2023: *Climate Change 2023: Synthesis Report. Contribution of Working Groups I, II and III to the Sixth Assessment Report of the Intergovernmental Panel on Climate Change* [Core Writing Team, H. Lee and J. Romero (eds.)]. IPCC, Geneva, Switzerland, pp. 35-115, doi: 10.59327/IPCC/AR6-9789291691647.

WHAT DENIERS DON'T RECOGNIZE

a) Observed widespread and substantial impacts and related losses and damages attributed to climate change



b) Impacts are driven by changes in multiple physical climate conditions, which are increasingly attributed to human influence

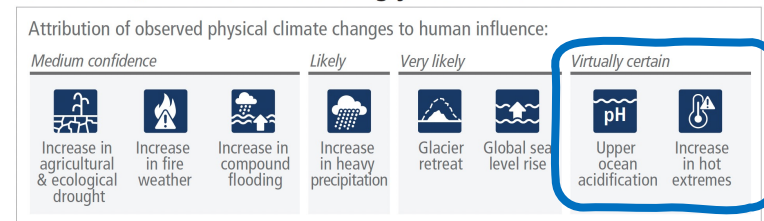
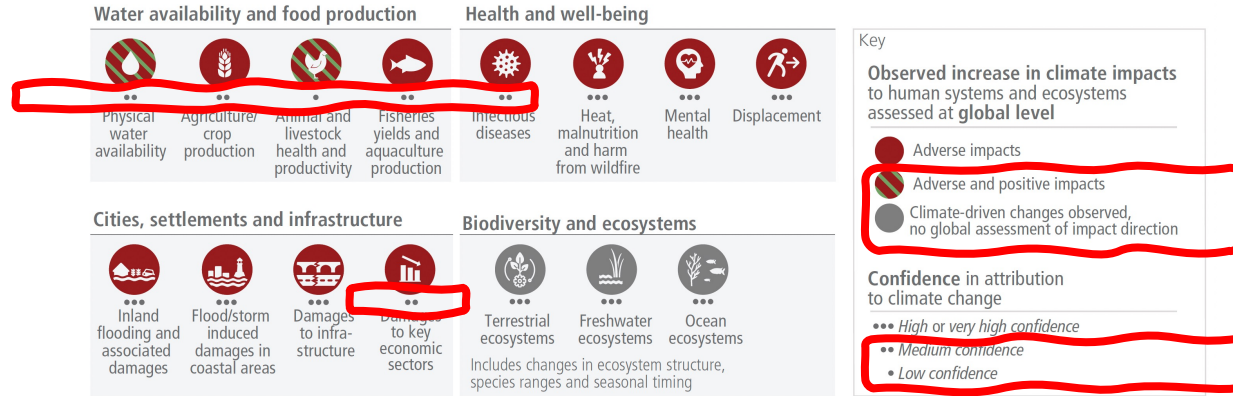


Figure SPM.1: (a) Climate change has already caused widespread impacts and related losses and damages on human systems and altered terrestrial, freshwater and ocean ecosystems worldwide. Physical water availability includes balance of water available from various sources including ground water, water quality and demand for water. Global mental health and displacement assessments reflect only assessed regions. Confidence levels reflect the assessment of attribution of the observed impact to climate change. (b) Observed impacts are connected to physical climate changes including many that have been attributed to human influence such as the selected climatic impact-drivers shown. Confidence and likelihood levels reflect the assessment of attribution of the observed climatic impact-driver to human influence. (c) Observed (1900–2020) and projected (2021–2100) changes in global surface temperature (relative to 1850–1900),

IPCC, 2023: *Climate Change 2023: Synthesis Report. Contribution of Working Groups I, II and III to the Sixth Assessment Report of the Intergovernmental Panel on Climate Change* [Core Writing Team, H. Lee and J. Romero (eds.)]. IPCC, Geneva, Switzerland, pp. 35–115, doi: 10.59327/IPCC/AR6-9789291691647.

WHAT ACTIVISTS DON'T TELL

a) Observed widespread and substantial impacts and related losses and damages attributed to climate change



b) Impacts are driven by changes in multiple physical climate conditions, which are increasingly attributed to human influence

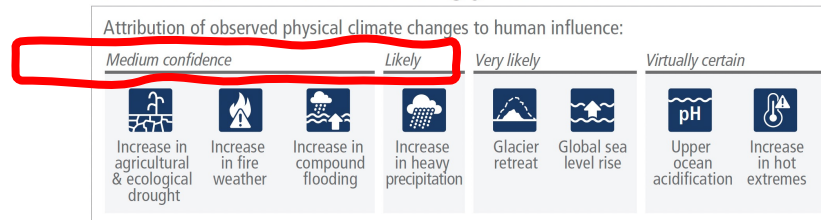


Figure SPM.1: (a) Climate change has already caused widespread impacts and related losses and damages on human systems and altered terrestrial, freshwater and ocean ecosystems worldwide. Physical water availability includes balance of water available from various sources including ground water, water quality and demand for water. Global mental health and displacement assessments reflect only assessed regions. Confidence levels reflect the assessment of attribution of the observed impact to climate change. (b) Observed impacts are connected to physical climate changes including many that have been attributed to human influence such as the selected climatic impact-drivers shown. Confidence and likelihood levels reflect the assessment of attribution of the observed climatic impact-driver to human influence. (c) Observed (1900–2020) and projected (2021–2100) changes in global surface temperature (relative to 1850–1900),

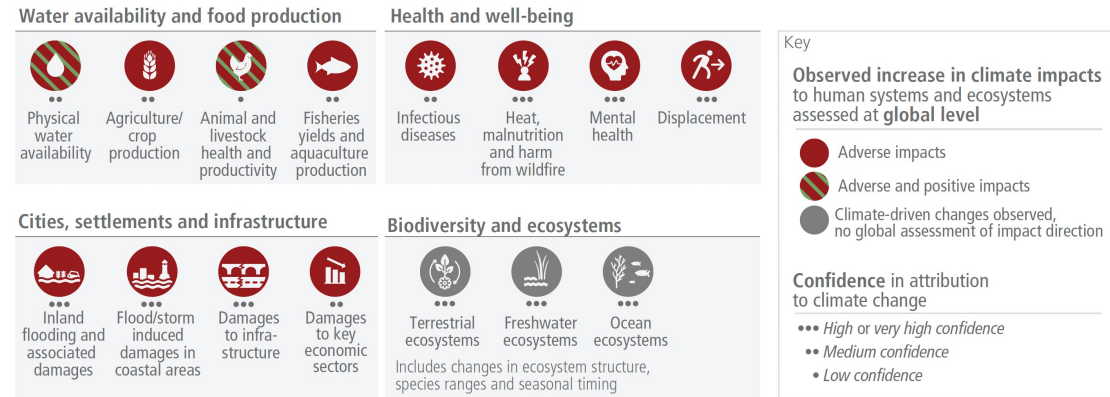
IPCC, 2023: *Climate Change 2023: Synthesis Report. Contribution of Working Groups I, II and III to the Sixth Assessment Report of the Intergovernmental Panel on Climate Change* [Core Writing Team, H. Lee and J. Romero (eds.)]. IPCC, Geneva, Switzerland, pp. 35–115, doi: 10.59327/IPCC/AR6-9789291691647.

DENIERS

tell us,

“No such thing.”

a) Observed widespread and substantial impacts and related losses and damages attributed to climate change



b) Impacts are driven by changes in multiple physical climate conditions, which are increasingly attributed to human influence

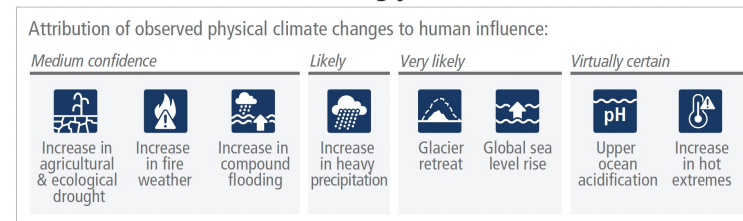


Figure SPM.1: (a) Climate change has already caused widespread impacts and related losses and damages on human systems and altered terrestrial, freshwater and ocean ecosystems worldwide. Physical water availability includes balance of water available from various sources including ground water, water quality and demand for water. Global mental health and displacement assessments reflect only assessed regions. Confidence levels reflect the assessment of attribution of the observed impact to climate change. (b) Observed impacts are connected to physical climate changes including many that have been attributed to human influence such as the selected climatic impact-drivers shown. Confidence and likelihood levels reflect the assessment of attribution of the observed climatic impact-driver to human influence. (c) Observed (1900–2020) and projected (2021–2100) changes in global surface temperature (relative to 1850-1900),

IPCC, 2023: *Climate Change 2023: Synthesis Report. Contribution of Working Groups I, II and III to the Sixth Assessment Report of the Intergovernmental Panel on Climate Change* [Core Writing Team, H. Lee and J. Romero (eds.)]. IPCC, Geneva, Switzerland, pp. 35-115, doi: 10.59327/IPCC/AR6-9789291691647.

ALARMISTS

tell us,

“Every single impact is adverse and human-caused.”

We have absolute certainty.

Every flood, every snow storm, every heat wave is human-caused.

This is science!”


ALARMISTS

tell us,

Contrary to popular ideas,
science is more about concepts than facts.

Notice how the general public got tripped
during the pandemic.

“Every single impact is
adverse and human-caused.

Alarmists are more confident than scientists. 

We have absolute certainty.

Every flood,
every snow storm,
every heat wave is
human-caused.

Scientists don't talk this way. 

This is science!”

DENIERS

tell us,

“No such thing.”

ALARMISTS

tell us,

“Every single impact is
adverse and human-caused.

We have absolute certainty.

Every flood,
every snow storm,
every heat wave is
human-caused.

This is science!”

DENIERS

tell us,

“No such thing.”

THE TRUTH

lies somewhere in between.

It is a gray zone.

It is a fuzzy space.

ALARMISTS

tell us,

“Every single impact is
adverse and human-caused.

We have absolute certainty.

Every flood,
every snow storm,
every heat wave is
human-caused.

This is science!”

ALARMISTS

preaching doomstay

- drive more people, particularly the young, into depression;
- charge people already in this camp with further hatred against that camp;
- charge people over that camp with further hatred against this camp.

What do we gain?



[watch on YouTube](#)

Pope Leo: “How do we teach people to become critical thinkers? ...”

I’m for independent thinking rather than critical thinking.

Bottom line: we shouldn’t sing-along, neither the deniers’ nor the alarmists’.

We are called to a camp that is neither. We are called to the 3rd camp. Not because we don’t dare to speak. Not because we don’t care. But because that’s where the truth lies. And that’s how we care for Creation.

DENIER

ALARMIST

THE 3RD CAMP

The 3rd camp

short form

We don't

- talk doomsday;
- condemn others;
- shout and curse louder;
- counter falsehood with falsehoods;
- pretend to know more.

We

- stop doing what we shouldn't, and
- start doing what we should,

not because of disasters, but because we are creatures of Creation.

We start with Creation (bottom-up approach), our common ground.

We don't start with "climate change" (top-down approach).

long form

By Franciscan charism we join fellow creatures, whether animate or inanimate, in the chorus of eternal praise. We recognize that we are neither the center of the universe nor the center of Creation. We don't forget that our decisions and activities form part of the carbon, nitrogen, phosphorus and water cycles. We don't put convenience and comfort above the healthy balance of our common habitat.

By Franciscan charism we cultivate good habits and let go of bad habits--to tune in better to the heartbeat of Creation. Our motivation and starting point are rooted in Creation, not in disasters or doomsday projections.

Francis asks us to be simple. We commit to the 3R's in consumption: reduce, reuse, recycle. We strive to reduce; when unable to reduce we strive to reuse; when unable to reuse we strive to recycle. In that order: recycling is no excuse from not reusing; reusing is no excuse from not reducing.

Francis asks us to be hospitable. We welcome and embrace. Committee engagements shall respect and promote independent thinking, and shall not seek to brainwash or convert. We take the opportunity to unite. Members decouple personal inclinations from committee engagements, which shall be politically agnostic. We count ourselves answerable if people leave shaking the dust off their feet.

Francis asks us to be humble. We learn, we seek deeper understanding and we grow in appreciation of Creation. We don't claim to be greener. We don't claim to know better and we don't say we're sure when we aren't. We note that of the climate-change impacts, losses and damages reported by IPCC, some are marked "pending global assessment" (i.e. we don't know yet) and some are marked "low confidence" (i.e. we are not sure)*.

We hear Francis say once again, "Until now we have done nothing, so let us begin!" Joyfully we partake in fraternal efforts here and elsewhere, past and present, to be better brothers and sisters to all that Francis calls brothers and sisters.

* IPCC, 2023. Climate Change 2023: Synthesis Report. Contribution of Working Groups I, II and III to the Sixth Assessment Report of the Intergovernmental Panel on Climate Change [Core Writing Team, H. Lee and J. Romero (eds.)]. IPCC, Geneva, Switzerland, pp. 58-115, doi: 10.59247/IPCC/AR6-9789291691647.

Zooming out

Tzu Chi	Roman Catholic Church
<p>Green efforts began decades ago, long before the rise of green movements.</p> <p>Operating from community levels, it pioneered recycling programs around the world, long before cities got interested.</p> <p>Since decades ago most Tzu Chi buildings around the world have a consistent built: sustainable and energy-efficient, with purpose-built, in-house gray-water systems.</p>	<p>We have some catching up to do.</p> <p>We focus too much on advocacy. We are too busy finger-pointing.</p> <p>We can be more consistent. We have a house to clean up. Some parishes lag behind city efforts. Most parishes over-bake in the winter (we need to remove our jackets) and super-chill in the summer (we need sweaters). The Catholic Church is a massive fossil-fuel-burning powerhouse everyday.</p> <p>We can be in better harmony with Creation. Liturgical vestments do not celebrate the four seasons, and are oblivious to the local climate from tropical to tundra.</p>

Mary PW Chin, PhD

Coordinates:

contact me@marychin.org

[pub list](#)

[professional profile](#)

[work in progress](#)